





## Adjust platform for you and your customers

4 - 5

We know that partners and customers have their own vision, which is what we realize in the WEB-SAT platform



## Advanced crash detection and analysis tools

6 - 7

Our crash detection system is an advanced module, created to support collision detection by devices, then proceed with an advanced algorithm in real time to prepare reliable information



## The best quality GPS terminals suitable for different types of use

8 - 9

WEB-SAT has always aimed at providing a unique product that could be customized and adjusted to every client's needs. That is why, we offer the full range of dedicated GPS terminals.



## Professional tachograph analysis of driving time

10

DDD and D8 data analysis with real time notification and report system according to Art. 10.3 EU Reg. 561/2006



## Maps services that the platform supports

11

One map service is not enough to make every customer happy. That's why we combine the two most important ones to create a powerful solution based on Google/HERE Maps



## Dedicated solutions created for our partners

12

CMC Transport Manager was one dedicated project implemented to easily meet customers' expectations. The solution contains internal audit application and reports for managing and controlling transport



## Mobile version, Super Admin platform, Garmin support

13

The WEB-SAT mobile app provides the most important features from the WWW platform. Garmin helps drivers to be in touch with dispatchers - communicate with them, send documents, and receive routes



## We would like to welcome you as a WEB-SAT partner

14

The list of selected partners that support the WEB-SAT solution extends all over world. We would like to invite you to join!



## About us

We are developers team with experience gathered over 15 years. Our solutions are based on newest, efficient, stable technologies. WEB-SAT Platform was designed to guarantee the highest performance in the simultaneous clients growth. Platform is being constantly improved. WEB-SAT continuously research for technical innovations, to be a leader on market. Headquarter is based in Poland. Company has foreign branches and the Partner channel actively developing products and building global sales.

The WEB-SAT offers users a whole package of benefits: savings, increased efficiency and effective control. The WEB-SAT platform allows you to tackle many of your customers' fleets, including unreasonable costs, poor performance, redundancy, or private use.

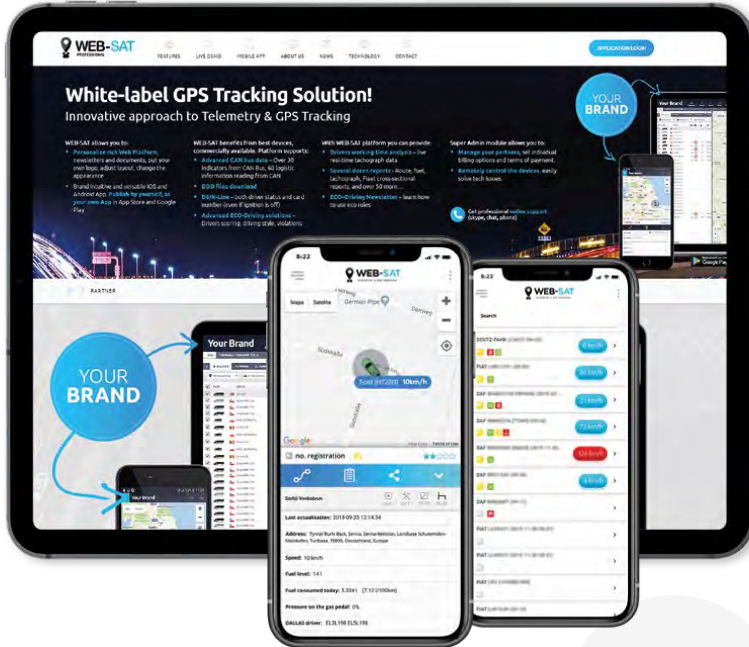
## Why WEB-SAT?

Our mission is adjusting the application to the requirements of our Partners and Customers. We work with the individual approach and involvement in the project. Thanks to this business values we build strong relations. Our Products such as CAT or Cash Saver were invented and implemented in 100% according to our vision. TachoPremium, Google Maps/HERE Maps were developed for the individual needs of our partners. WEB-SAT loves challenges – we can implement every specified module, application, or requirement.



# WEB-SAT White Label Platform

Personalize rich Web Platform, newsletters and documents, put your own logo, adjust layout, change the appearance.



Platform brings all information you need in one dashboard. Use all Google Maps advantages. Open the apps and reports you need in internal tabs. Unique Tachograph data analysis. Possibility of easy DDD files download. Now you can schedule your downloads and data will be automatically transferred to the platform or synchronize the downloads with your FTP server.

ECO-Driving Scoring provides reliable data about the driving style. WEB-SAT Review eco-driving abilities. WEB-SAT send newsletter with detailed information about the driving dynamics, breakings, accelerations, work of the engine.

## Elements that can be personalized:



### Web platform

Use your own logo, set preferred appearance and language



### Super Admin

Manage your customers, users, devices, sim cards, payments, etc with your own Administration System



### E-mail server

Send notifications, scheduled and ddd reports, billings with your own e-mail address



### Tailor-made

Get the dedicated individual functionalities just for your platform



### Mobile apps

Publish as your own application in Google Play and Apple Store



### Domain

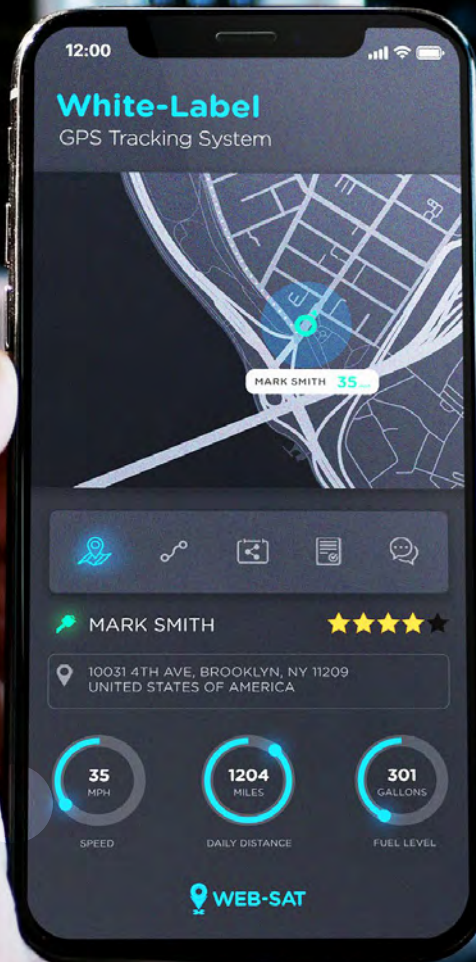
Use your own logo, set preferred appearance and language



### SMS Gateway

Choose by yourself SMS Gateway to send SMS notifications and alerts





## App main features:

### Fleet status

- Positions
- History
- Zones
- Planning
- Distance
- Animation
- Analysis of driver working time

### Google Maps

- Real time traffic information
- Roadmap, satellite, hybrid
- Speed limits
- Advanced Route planning
- Search on map (address, company name, post codes)

### Vehicle status

- Current speed, millage, fuel
- Tachograph data
- Smart Analysis of driver working time
- Engine parameters
- Fuel Consumption
- Device and GPS activity
- CAN Indicators

### Reports

- Route, fuel, daily distance, stops, tachograph, eco-driving, ignition, zones
- Drivers working time, vehicle driving time
- Fleet cross-sectional reports
- And over 50 more...

# CAT Crash Analysis Tools

Use the live timeline panel with Google Street View  
20 second cycle of detailed analysis

## Precise data driven by:

- ✓ GPS
- ✓ 3D Accelerometer
- ✓ Google Maps with road speed limits  
satellite and street view
- ✓ CAN Data







## Crash Analysis Tools

- CAT application allows one to analyze a road accident with high precision. CAT presents the data ranging from 10 seconds before to 10 seconds after the road accident
- Give every user instant access to smart timeline panel with Google Street View, impact data, force directions and more.
- Accident data is stored on the cloud and available from any computer with the internet access.
- At the time of the accident data is automatically sent to the Crash Analysis Tool server. AI analysis allows for easy reconstruction of the of accident.
- Telematics devices with the BlackBox feature allows recording of the data with the very high frequency, Data is stored in cache in the time loop, which contains all the parameters.

# Telematics devices

## The best quality GPS terminals suitable for different types of use

The WEB-SAT platform currently supports a variety of terminals by renowned manufacturers from around the world. We are open to cooperation with any devices manufacturer, as long as they have open communication protocols that guarantee full and independent operation of the terminal.

Many advanced functionalities are based on professional GPS terminals. They were introduced in cooperation with Albatross System Sp. z o.o. which offers some of the best quality devices for various vehicle types, such as light fleets, trucks, special vehicles, hybrid and electric vehicles, motorcycles, etc.

WEB-SAT has always aimed at providing a unique product that could be customized and adjusted to every client's needs. That is why, apart from the white-label platform, we also offer the full range of Albatross System products. As a partner, we can offer the products on special terms as part of providing a comprehensive solution. We can adopt any business model for cooperation. Of course, it is possible to cooperate directly with the manufacturers of terminals and incorporate them into applications.

### 3 basic terminal versions, depending on their equipment and capabilities:

#### S10.2 S10.2 - GPS tracker (2G/LTE)

#### S10.3 S10.3 - GPS tracker (2G/LTE)

guaranteed CAN data reading according to the list of supported vehicles (~800 vehicles)

#### S10.5 S10.5 - GPS tracker (2G/LTE)

guaranteed CAN data reading according to the list of supported vehicles (~800 vehicles) + full integration with digital tachographs (DDD files, activities, drivers' names, drivers' working time - driver's remaining time counters according to Regulation 561/2006)



#### LTC counters

##### Group 1 counters

Duration of the break – only during its duration

00:00

BTD

Time Left Driving

03:16

RDY

Daily Driving Time Remaining

08:42

RDDT

Total driving time

01:18

TDOT

Start of work

05:21

DS

Driving time since last 45 one minute break

01:14

DT45

##### Group 2 counters

Current activity

00:24

CA

Two-week working time

45:33

DT2W

Nearest break required

00:45

NRR

Maximum time allowed driving

04:30

MOT

Next daily rest

09:00

NDBP

Weekly Driving Time Remaining

43:25

RWDT

Time (remaining) to rest weekly

72:31

TTWR

Rest required weekly

24:00

NWR

Weekly driving time

12:35

WDT

Driving time 10

00:00

DT10H

Start of the current week 1 week start

2021-09-06  
08:45:00

1WS/WS

Beginning of the current period biweekly

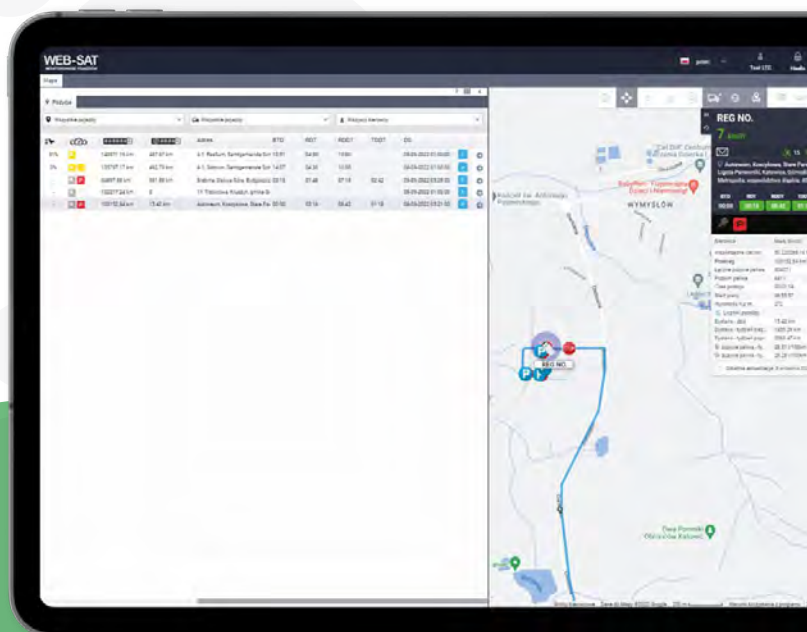
2021-08-30  
03:43:00

2WS

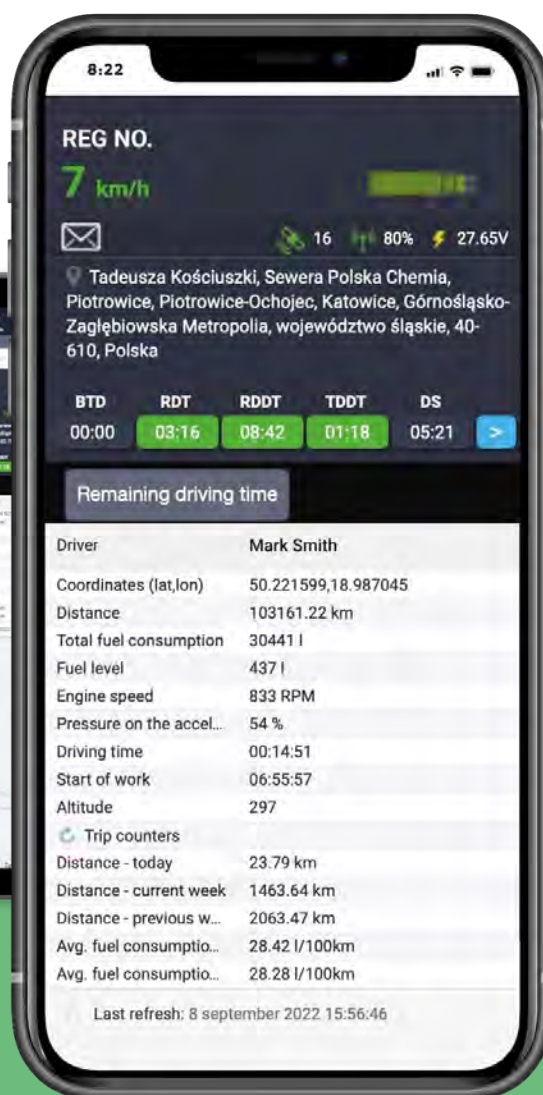


# The main advantages of terminals

- Modern CAN module for the automotive market:
  - **ISO CAN FD support (support for the new CAN FD standard - the ability to work with new generation vehicles)**
  - AEC-Q100 qualified (certificate of compliance with environmental conditions)
  - ASIL-B classification - ISO 26262 (automotive safety class certification)
  - Data reading (J1939/1708/1587/FMS/OBDII/CAN-TACHO/D8)
  - Automatic CAN synchronization - no need for the manual configuration of CAN module. Automatic configuration under the connected CAN bus
- Dedicated additional logic processor to implement any changes according to the customer's projects (special functions, partner's logic algorithms, integration with additional modules by serial communication) - unlimited possibilities of implementing changes to meet the customer's project requirements
- Modem with 2G/LTE support
- GPS, GLONASS, GALILEO, BeiDou, QZSS receiver
- External GPS and GSM (2G/LTE) antennas to guarantee the ability to correctly output GSM/GPS signal
- GPS and GSM Jamming detection
- Bluetooth Low Energy data reading (iBeacon, TAG BLE, etc.)
- Support for Continental TPMS module providing readout for:
  - Current tire pressure
  - Current tire temperature
  - Alerts on exceeding limit values
  - Status of individual tire sensors



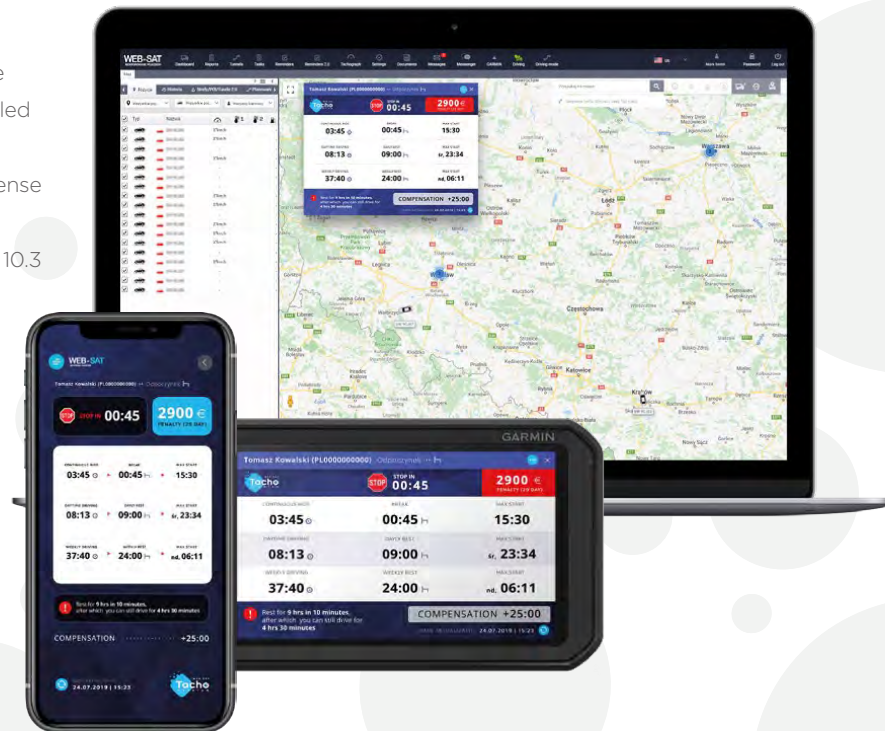
- 3D sensor as a black box for car accident detection and analysis
  - Detection of braking acceleration and sharp turns
  - Vehicle towing alert
- Reading of DTC error codes using OBDII connection
- Internal battery to maintain the terminal's operation and inform when the device is disconnected from the power supply



# Tacho Premium Alerter

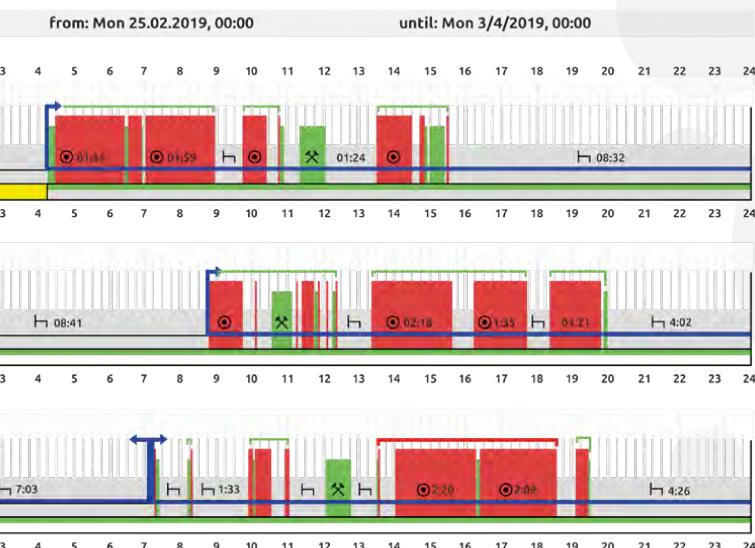
## Infringement Alert

- Current and precise analysis of driver's working time within range of 29 days - as if the driver was controlled on the road every few minutes!
- Direct guidance for driver before committing an offense
- The history of alerts and advices sent to drivers constitutes legal protection, in accordance with Art. 10.3 EU Reg. 561/2006
- 100% compatibility with EU Regulations and 561/2006 EC Regulation
- Calculation of penalties according to the local penalty tariffs
- Data available to driver in Garmin and Android/iOS mobile applications
- Multilingual system service



## Tacho Premium Raport

Unbeatable solution for controlling and analyzing drivers working time.



- Over 20 PDF and XML vehicle reports and driver's working time analysis, available in over 15 languages with all EU tariffs
- Penalties calculation based on 15 European tariffs
- Analysis of work time violations, breaks and rest periods according to EC 561/2006
- The algorithms are used by 18 European control services, such as Police, Road Transport Inspections and Labor Inspections
- Ability to generate reports according to penalties in many languages
- In case of imposition of excessive penalties due to driver or company inspection, additional legal advice may be agreed in order to minimize penalties



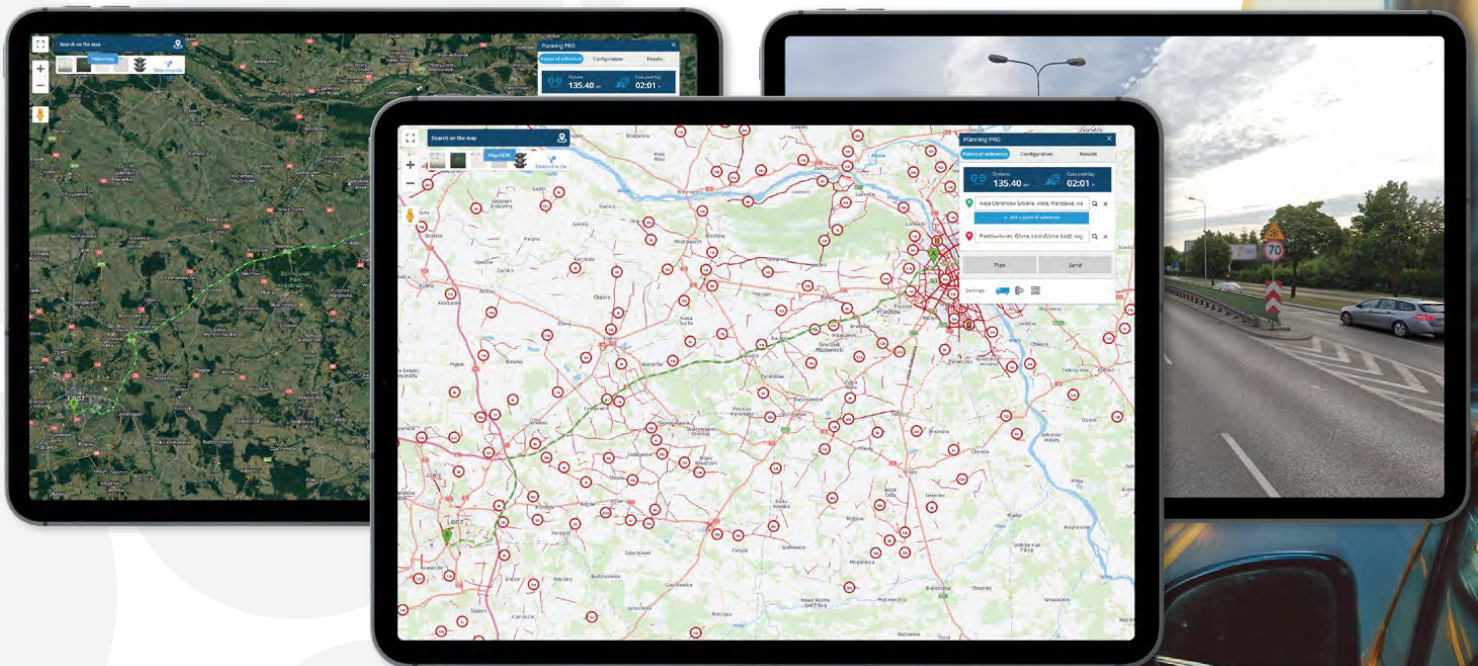
## Maps services integrated in WEB-SAT/CAT/Mobile platforms

Get complete control of your routes and calculate trips for the standard passenger cars, vans and trucks.

**Powered by HERE Maps platform.**

### Google Maps

- ✓ Road map, satellite, street view, always up to date (newest map with every refreshment)
- ✓ Live traffic – Google Maps helps you to get the right directions to go anywhere by real-time traffic monitoring
- ✓ Autocomplete – automatic suggestions while searching for the destination point
- ✓ Vehicle grouping on map will optimize the display of many objects



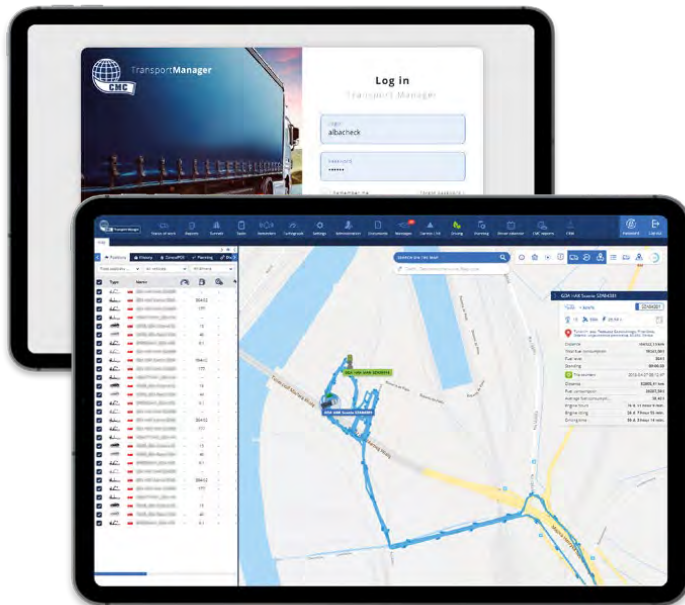
### HERE Maps

- ✓ Define individual profiles for every vehicle assigned to WEB-SAT: GVWR, axle load, height, width, number of axles, emission certification and fuel type
- ✓ Get the precise route layered on HERE Maps
- ✓ Maps for transport and logistics - containing obstacles and restrictions for heavy goods vehicles
- ✓ Routing for trucks - including infrastructure restrictions, regulations and toll costs
- ✓ Read additional trip costs for the toll roads

## Dedicated platform

### Example of dedicated platform created for Our Customer

WEB-SAT engine was implemented to easily meet the customers' expectations, in building his dedicated product. The case in point is WEB-SAT web application adapted to Commercial Metals Company (CMC) company, named Transport Manager.



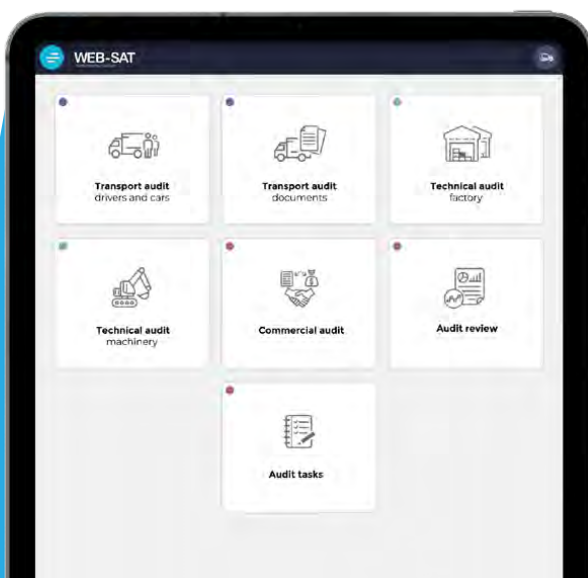
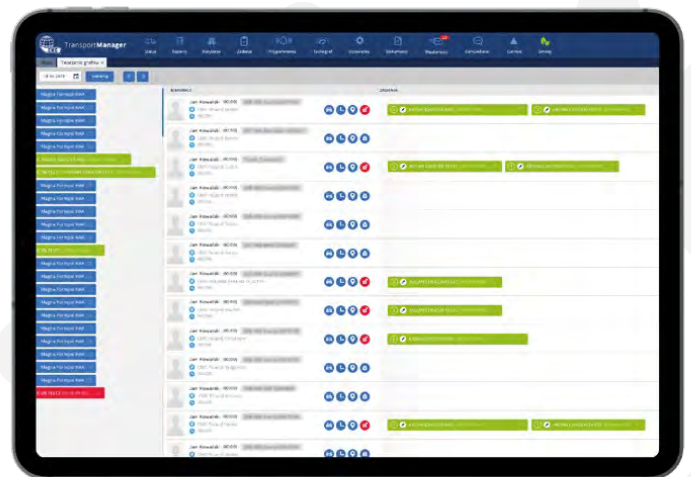
- ✓ **Dedicated application layout**
- ✓ **Login page**
- ✓ **Domain name**

Commercial Metals Company (CMC) is a global company which manufactures, recycles and markets steel and metal products, related materials and services. The company operates in the area of USA, Europe, Australia, Asia, and has its own branches in the 8 countries.

CMC Poland Sp. z o.o. is the Polish branch based in Zawiercie, Poland, with the steel mill and dozens of locations throughout the country.

### Dedicated reports especially for managing and controlling the CMC transports

- List of requests
- Composer of drivers' schedule
- Weekly tasks overview
- Printing and previewing of the drivers' tasks
- Accounting and verifying of containers
- Detailed transport costs report
- Containers stocktaking and rotation
- Tasks status report



### Internal audit application

Implemented for the individual customers' specification. Makes collecting of hundreds of data easy. The auditing application is divided into the following sections:

- Driver and transport
- Transport documentation
- Technical of facility
- Technical of machine
- Commercial





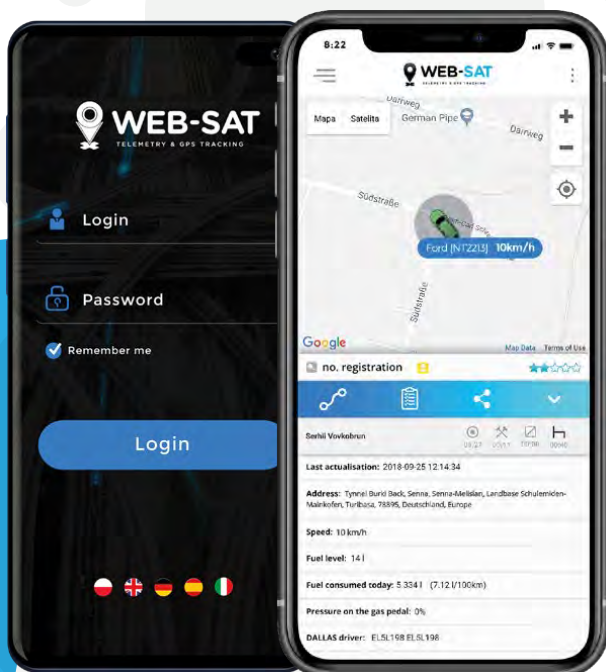
## Super Admin Application

Dedicated platform to manage all devices on one account. Created in special way to make it easier and as fast as possible! Support your partners, set individual billing options and terms of payment. Remotely control, configure, update the devices - easily solve tech issues. Create users, set permissions, grant permissions, and assign to branches.

## GARMIN

WEB-SAT is fully integrated with GARMIN, Company with more than 11,500 associates in 60 offices around the world, GARMIN bring GPS navigation and wearable technology to the automotive, aviation, marine, outdoor and fitness markets. GARMIN thinks every day is an opportunity to innovate, and a chance to beat yesterday.

- Communicate and set a route to your drivers.
- Control the progress of assigned tasks.
- Sent photos, scanned documents, react immediately to dynamic changes.



## Mobile application

View your fleet from your smartphone as you do from the office, whether you're in the field, in meetings, or at the airport. Native mobile app gives you full functionality, not just mobile web browsing. Based on Google Maps API with satellite, traffic, street view support. Remain features:

- iOS and Android versions
- Publish by yourself, as your own App in App Store or Google Play.
- Check ECO-Driving scoring as driver or account manager
- Users (Drivers) can use internal messages to accept their tasks or send information to the dispatcher.
- Brand intuitive and versatile
- Can contain all features that was created in WWW platform.

# WEB-SAT official and trusted Partners

We are happy that the WEB-SAT platform has many local offices all over the world. Individual contracts, market exclusiveness, a dedicated platform and realtime support: that all come in one package.

In Poland there are **38 partners** with the dedicated platform, with **72 total offices all over world.**



Check it out for **free now!**



## WEB-SAT Headquarters

Warsaw, Sosnkowskiego 1, 02-495  
Katowice, Sobieskiego 11/E6, 40-082



+48 505 184 788



[sales@web-sat.com](mailto:sales@web-sat.com)



## WEB-SAT Pro

Rob Verhagen  
PO BOX 652, Boronia 3155, Victoria, Australia



+61 414866752



[rob@web-sat.com](mailto:rob@web-sat.com)



## WEB-SAT DACH

Patrick Wagner Hugo-  
Wolf-Gasse 8/14 8010  
Graz, Austria



+43 664 73241461



[patrick@web-sat.com](mailto:patrick@web-sat.com)



## WEB-SAT Pro

Dan Shaw  
3 Tamworth Road,  
Coventry CV6 2JH



+44 07947670844



[dan.shaw@web-sat.com](mailto:dan.shaw@web-sat.com)



## WEB-SAT UAE

Apogee Information Services (FZC),  
P8-07-22, P.O. Box 120652,  
Sharjah Airport International Free Zone (SAIF),  
Sharjah, United Arab Emirates



+96 550068743



[paul@web-sat.com](mailto:paul@web-sat.com)



## WEB-SAT Chile

Av. Apoquindo 6410,  
oficina 202, Las Condes  
Santiago, Chile



+56 2-2840 0987



[info@websat.cl](mailto:info@websat.cl)



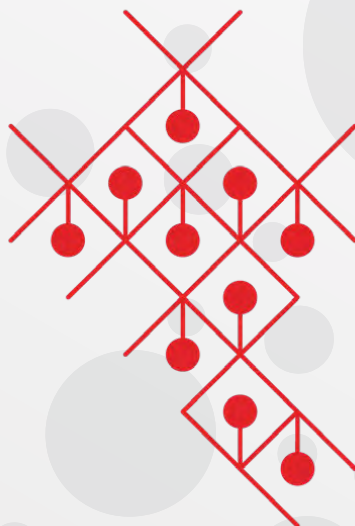
Web-sat

# Power of technology



WEB-SAT





# Polska



**European  
Funds**  
Smart Growth



**Republic  
of Poland**

**European Union**  
European Regional  
Development Fund



**WARSAW | KATOWICE | POLAND**

E : [sales@web-sat.com](mailto:sales@web-sat.com)

P : +48 505 184 778

W : [www.web-sat.com](http://www.web-sat.com)